

LEGEND
 BEARINGS ARE REFERRED TO THE NEW MEXICO STATE PLANE COORDINATE SYSTEM, NAD83 CENTRAL ZONE. DISTANCES SHOWN ARE GROUND LEVEL REFERRED TO 6800' AMSL DATUM. TO CONVERT DISTANCES TO GRID DISTANCES MULTIPLY BY A SCALE FACTOR OF 0.999598.

- ♦ DENOTES REBAR, OR AS SHOWN, FOUND.
- DENOTES 1/2" REBAR WITH CAP 7014 TO BE SET UPON RECORDING.
- DENOTES CALCULATED POINT, NOT SET.
- DENOTES NEW LOT LINE.
- ⓪ DENOTES TRACT NUMBER.

NOTE
 REFER TO "LOT LINE ADJUSTMENT PLAT FOR BECKNER ROAD EQUITIES, INC." SHEETS 1, 2 AND 3 OF 3, BY GARY E. DAWSON, DATED 8/26/08, FOR OTHER EASEMENTS WITHIN THIS PROPERTY.

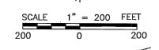
SURVEYORS CERTIFICATE
 I HEREBY CERTIFY THAT THIS PLAT IS A TRUE REPRESENTATION OF A SURVEY COMPLETED UNDER MY PERSONAL SUPERVISION ON THE 28th DAY OF AUGUST, 2008, TO THE BEST OF MY KNOWLEDGE, THE SURVEY AND PLAT ARE CORRECT, TRUE AND MEET THE MINIMUM STANDARDS FOR LAND SURVEYS IN NEW MEXICO.

GARY E. DAWSON, T.M.P.S.#7014



ZONING LEGEND

C-2	- GENERAL COMMERCIAL
SC-2	- COMMUNITY COMMERCIAL
C-1	- OFFICE
BIP	- BUSINESS INDUSTRIAL PARK
HZ	- HOSPITAL ZONE-LAS SOLERAS
MU	- MIXED USE
RM-1	- RESIDENTIAL HIGH DENSITY
RM-LD	- RESIDENTIAL MEDIUM DENSITY
R-6	- RESIDENTIAL LOW DENSITY



"TITLE AND INDEXING INFORMATION FOR THE COUNTY CLERK"

**ZONING PLAT
 PREPARED FOR
 BECKNER ROAD EQUITIES, INC.**

WITHIN
 SECTIONS 7, 17 & 18, T.16N., R.9E., N.M.P.M.
 SANTA FE COUNTY, N.M.

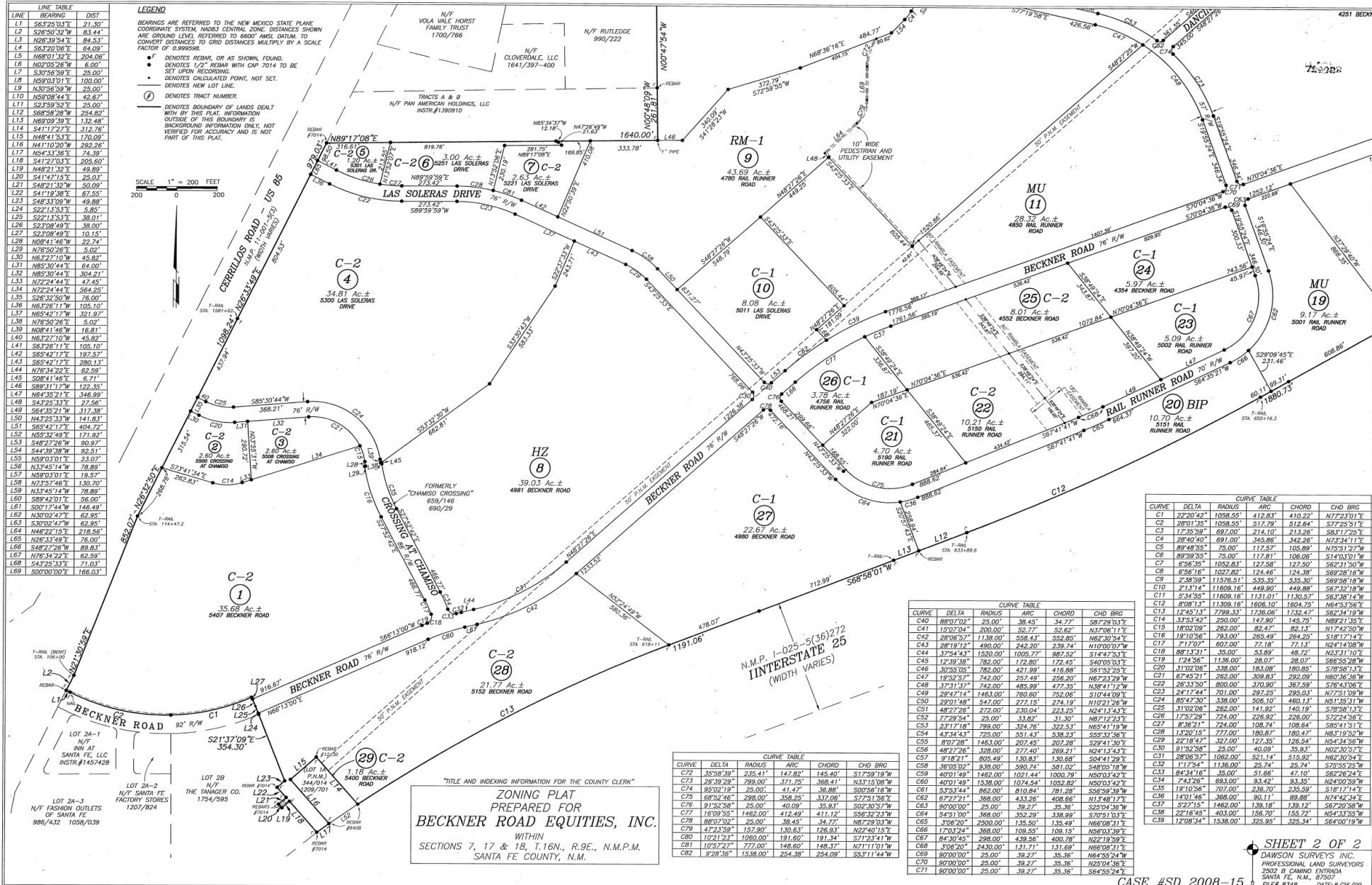
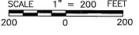
SHEET 1 OF 2
 DAWSON SURVEYS INC.
 PROFESSIONAL LAND SURVEYORS
 2502 B CAMINO ENTRADA
 SANTA FE, N.M. 87507
 FILE# 8348 DATE: 8/26/08

CASE #SD 2008-15

LINE	BEARING	DIST
L1	S63°29'03"E	21.30'
L2	S26°50'32"W	23.44'
L3	N26°39'54"E	84.53'
L4	S63°20'06"E	64.09'
L5	N80°10'32"E	204.08'
L6	N02°02'26"W	6.00'
L7	S30°56'59"E	25.00'
L8	N59°03'01"E	100.00'
L9	N35°59'59"E	23.00'
L10	N59°08'44"E	42.62'
L11	S23°59'32"E	25.00'
L12	S05°58'28"W	234.80'
L13	N89°09'39"E	132.48'
L14	S41°12'22"E	312.76'
L15	N48°41'53"E	170.09'
L16	N41°10'20"E	292.20'
L17	N54°33'56"E	74.39'
L18	S41°27'03"E	205.60'
L19	N48°21'32"E	49.89'
L20	S41°47'15"E	25.03'
L21	S48°21'32"W	50.09'
L22	S41°19'38"E	67.53'
L23	S48°33'09"W	49.89'
L24	S22°13'53"E	5.85'
L25	S21°13'53"E	38.01'
L26	S23°08'49"E	38.00'
L27	S23°08'49"E	10.15'
L28	N08°41'46"W	22.74'
L29	N76°30'26"E	5.02'
L30	N82°22'10"E	42.85'
L31	N85°30'44"E	64.00'
L32	N85°30'44"E	304.21'
L33	N72°24'44"E	564.25'
L34	N72°24'44"E	564.25'
L35	S26°32'30"W	76.00'
L36	N6°28'11"E	105.10'
L37	N85°42'17"E	321.00'
L38	N76°50'26"E	5.02'
L39	N08°41'46"W	16.81'
L40	N63°22'15"E	45.82'
L41	S63°26'11"E	105.10'
L42	S65°42'17"E	197.57'
L43	S65°42'17"E	280.13'
L44	N76°34'22"E	62.95'
L45	S08°41'46"E	6.71'
L46	S89°31'17"W	122.35'
L47	N84°35'21"E	346.89'
L48	S43°23'33"E	27.56'
L49	S64°35'21"E	317.38'
L50	N43°25'33"E	141.83'
L51	S65°42'17"E	404.72'
L52	N55°32'48"E	171.92'
L53	S48°22'26"W	90.97'
L54	S44°39'38"E	92.31'
L55	N55°03'01"E	23.07'
L56	N33°45'14"W	78.89'
L57	N59°03'01"E	19.57'
L58	N23°52'46"E	130.70'
L59	N33°45'14"W	78.89'
L60	S89°42'01"E	56.00'
L61	S00°17'44"W	146.49'
L62	N30°02'47"E	62.95'
L63	S30°02'47"E	62.95'
L64	N48°21'32"E	218.58'
L65	N26°33'59"E	76.00'
L66	S48°22'26"W	89.83'
L67	N76°34'22"E	62.95'
L68	S43°23'33"E	71.03'
L69	S00°00'00"E	166.03'

LEGEND

- BEARINGS ARE REFERRED TO THE NEW MEXICO STATE PLANE COORDINATE SYSTEM, NAD83 CENTRAL ZONE. DISTANCES SHOWN ARE CHORD LEVEL REFERRED TO 6600' AMSL DATUM. TO CONVERT DISTANCES TO GRID DISTANCES MULTIPLY BY A SCALE FACTOR OF 0.999588.
- DENOTES REBAR, OR AS SHOWN, FOUND.
- DENOTES 1/2" REBAR WITH CAP 7014 TO BE SET UPON RECORDING.
- DENOTES CALCULATED POINT, NOT SET.
- DENOTES NEW LOT LINE.
- DENOTES TRACT NUMBER.
- DENOTES BOUNDARY OF LANDS DEALT WITH BY THIS PLAT. INFORMATION OUTSIDE OF THIS BOUNDARY IS BACKGROUND INFORMATION ONLY, NOT REVIEWED FOR ACCURACY AND IS NOT PART OF THIS PLAT.



"TITLE AND INDEXING INFORMATION FOR THE COUNTY CLERK"

ZONING PLAT
PREPARED FOR
BECKNER ROAD EQUITIES, INC.

WITHIN
 SECTIONS 7, 17 & 18, T.16N., R.9E., N.M.P.M.
 SANTA FE COUNTY, N.M.

CURVE	DELTA	RADIUS	ARC	CHORD	CHD BRG
C72	32°58'39"	235.41'	147.82'	145.40'	S17°59'10"W
C73	28°39'29"	299.00'	371.75'	368.41'	N33°15'08"W
C74	85°02'19"	25.00'	41.47'	36.88'	S00°56'16"W
C75	65°52'46"	288.00'	358.25'	332.06'	S77°51'56"E
C76	91°32'58"	25.00'	40.09'	35.93'	S02°40'27"W
C77	160°09'55"	1469.00'	412.45'	411.12'	S56°32'22"E
C78	86°07'02"	25.00'	38.45'	34.77'	N87°29'03"W
C79	47°23'59"	157.80'	130.63'	126.63'	N27°40'15"E
C80	102°21'23"	1069.00'	191.60'	191.34'	S71°24'14"W
C81	105°27'22"	772.00'	146.60'	148.37'	N71°11'01"W
C82	9°28'36"	1538.00'	254.38'	254.09'	S53°11'44"W

CURVE	DELTA	RADIUS	ARC	CHORD	CHD BRG
C40	88°02'01"	25.00'	38.45'	34.77'	N87°29'03"E
C41	15°07'04"	200.00'	52.77'	52.62'	N37°06'11"E
C42	28°06'57"	1138.00'	558.43'	552.65'	N62°30'54"E
C43	28°19'12"	490.00'	249.20'	239.24'	N10°00'07"W
C44	37°54'43"	1590.00'	1009.77'	987.92'	S14°42'53"E
C45	12°39'38"	782.00'	172.80'	172.45'	S40°05'03"E
C46	30°53'05"	782.00'	421.99'	416.88'	S61°52'29"E
C47	19°52'37"	749.00'	252.49'	256.20'	N67°32'29"W
C48	37°31'37"	742.00'	485.89'	477.35'	N58°41'12"W
C49	29°47'14"	1483.00'	780.60'	752.06'	S10°44'09"E
C50	29°01'48"	542.00'	272.15'	274.19'	N10°21'26"W
C51	48°27'26"	272.00'	630.04'	623.26'	N04°14'43"E
C52	77°29'54"	25.00'	33.82'	31.30'	N87°12'23"E
C53	23°17'18"	789.00'	324.76'	322.53'	N65°41'19"W
C54	43°34'41"	775.00'	651.43'	638.23'	N04°14'43"E
C55	80°29'48"	1483.00'	207.45'	207.28'	S29°41'50"E
C56	48°27'26"	328.00'	277.40'	269.21'	N24°11'43"E
C57	91°82'11"	805.49'	130.83'	130.68'	S04°41'29"E
C58	36°05'02"	936.00'	590.74'	581.02'	S48°03'18"W
C59	40°01'49"	1462.00'	1021.44'	1000.79'	N50°03'42"E
C60	40°01'49"	1538.00'	1074.54'	1052.82'	N50°03'42"E
C61	53°53'44"	862.00'	610.84'	281.28'	S59°59'58"W
C62	67°27'21"	368.00'	433.26'	408.66'	N13°48'17"E
C63	80°00'00"	25.00'	39.27'	35.36'	S25°04'36"W
C64	54°51'00"	368.00'	651.43'	638.23'	S70°51'03"E
C65	3°06'20"	2500.00'	135.50'	135.49'	N68°06'31"E
C66	17°03'24"	368.00'	109.55'	109.15'	N56°04'39"E
C67	84°30'25"	298.00'	439.56'	400.28'	N2°12'59"E
C68	3°06'20"	2430.00'	131.71'	131.69'	N68°06'31"E
C69	80°00'00"	25.00'	39.27'	35.36'	N64°58'24"W
C70	80°00'00"	25.00'	39.27'	35.36'	N25°04'36"W
C71	80°00'00"	25.00'	39.27'	35.36'	S64°58'24"W

CURVE	DELTA	RADIUS	ARC	CHORD	CHD BRG
C1	22°20'42"	1058.55'	412.83'	410.22'	N77°23'01"E
C2	26°01'35"	1058.55'	517.29'	512.64'	S77°25'51"E
C3	17°35'59"	697.00'	374.10'	213.26'	S81°12'29"E
C4	26°40'40"	691.00'	345.86'	342.26'	N23°54'11"E
C5	89°48'25"	75.00'	117.57'	105.89'	N75°51'27"W
C6	89°59'25"	75.00'	117.81'	106.06'	S14°04'01"W
C7	6°46'16"	1692.81'	122.98'	122.90'	S62°31'50"W
C8	6°56'16"	1622.82'	124.46'	124.36'	S69°28'16"W
C9	2°49'59"	11976.51'	535.35'	535.30'	S69°58'18"W
C10	21°51'41"	11609.16'	449.90'	449.88'	S67°32'18"W
C11	5°34'55"	11609.16'	1131.01'	1130.52'	S64°38'14"W
C12	8°08'13"	11309.16'	1606.10'	1604.75'	N64°51'56"E
C13	12°45'13"	7298.33'	1736.06'	1734.47'	S62°34'19"W
C14	33°54'52"	290.00'	142.90'	145.75'	N89°21'55"E
C15	18°02'29"	262.00'	82.47'	82.13'	N17°42'50"W
C16	19°10'56"	793.00'	265.49'	264.25'	S16°17'14"E
C17	71°70'07"	607.00'	77.18'	77.13'	N24°14'08"W
C18	88°13'31"	35.00'	53.89'	48.72'	N23°31'10"E
C19	174°56"	1136.00'	28.07'	28.07'	S66°55'28"W
C20	31°02'08"	338.00'	183.08'	180.85'	S78°38'13"E
C21	67°45'21"	262.00'	390.81'	392.09'	N50°16'16"W
C22	26°33'50"	800.00'	370.80'	367.59'	S76°43'06"E
C23	24°12'44"	701.00'	292.25'	285.03'	N73°10'29"W
C24	89°02'07"	338.00'	508.10'	460.11'	N51°55'11"W
C25	31°02'08"	262.00'	141.82'	140.19'	S78°58'13"E
C26	17°52'29"	724.00'	226.92'	228.00'	S72°24'56"E
C27	83°36'21"	724.00'	108.74'	108.64'	S84°31'31"E
C28	13°20'15"	77.00'	180.67'	180.71'	N81°19'52"W
C29	22°18'42"	327.00'	126.54'	126.54'	N54°34'56"W
C30	91°52'28"	25.00'	40.09'	35.93'	N02°40'57"E
C31	28°05'27"	551.14'	25.74'	25.74'	S72°55'25"E
C32	114°34'16"	35.00'	51.66'	47.10'	S62°26'24"E
C34	74°23'52"	683.00'	63.42'	63.62'	N60°00'59"W
C35	88°10'56"	707.00'	236.70'	235.89'	S15°11'14"E
C36	14°01'46"	368.00'	80.11'	89.88'	N74°42'34"E
C37	82°7'15"	1462.00'	139.18'	139.12'	S67°20'58"W
C38	27°16'45"	403.00'	156.72'	155.72'	S67°16'45"W
C39	12°08'34"	1538.00'	325.85'	325.34'	S60°05'19"W

SHEET 2 OF 2
 DAWSON SURVEYS INC.
 PROFESSIONAL LAND SURVEYORS
 2500 R CAMINO ENTRADA
 SANTA FE, N.M. 87507
 FILE# 8348 DATE: 8/26/09

CASE #SD 2008-15